
ALGIDUO

1. Generic Name

Alginate Raft-Forming Oral Suspension B.P.

2. Qualitative and quantitative composition

Each 5 ml contains:

Sodium Alginate I.P.250 mg

Sodium Bicarbonate I.P.133.5 mg

Calcium Carbonate I.P. 80 mg

Flavoured Base..... q.s.

Sodium Content (In 5 ml) - Less than 70 mg

Saccharin Sodium I.P. (As artificial sweetener)

The excipients used are Methyl Paraben, Propyl Paraben, Disodium Edetate, Saccharin Sodium, Sorbitol, Carbomer Homo, Polysorbate-80, Colloidal Silicon Dioxide, Sodium Hydroxide Pellets, Menthol, Propylene Glycol and Citric Acid Monohydrate.

3. Dosage form and strength

Dosage form: Oral suspension

Strength:250 mg + 133.5 mg + 80 mg

4. Clinical particulars

4.1 Therapeutic indication

It is indicated for the treatment of heartburn and Indigestion.

4.2 Posology and method of administration

Posology

Adults and children 12 years and over: 5 -10ml

Children under 12 years: Should be given only on medical advice.

Elderly: no dose modification is required in this age group.

Method of administration

It should be given after meals and at bedtime.

4.3 Contraindications

This medicinal product is contraindicated in patients with known or suspected hypersensitivity to any of the ingredients, or any of the excipients listed.

4.4 Special warnings and precautions for use

If symptoms do not improve after seven days, the clinical situation should be reviewed.

This medicinal product contains about 106 mg (5.1mmol) sodium per 10 ml dose, equivalent to 5.3% of the WHO recommended maximum daily intake for sodium.

The maximum daily dose of this product is equivalent to 21% of the WHO recommended maximum daily intake for sodium.

This product is considered high in sodium. This should particularly be taken into account for those on a low salt diet (e.g in some cases of congestive cardiac failure and renal impairment).

Potassium: This medicine contains 78 mg (2.0 mmol) potassium per 10 ml dose. To be taken into consideration by patients with reduced kidney function or patients on a controlled potassium diet.

Each 10ml contains 200 mg (2.0 mmol) of calcium carbonate. Care needs to be taken in treating patients with hypercalcaemia, nephrocalcinosis and recurrent calcium containing renal calculi.

Contains para hydroxybenzoates (E214, E216); may cause allergic reactions (possibly delayed)

4.5 Drugs interactions

A time-interval of 2 hours should be considered between ALGIDUO intake and the administration of other medicinal products, especially tetracyclines, fluoroquinolones, iron salts, thyroid hormones, chloroquine, bisphosphonates, and estramustine.

4.6 Use in special populations (such as pregnant women, lactating women, paediatric patients, geriatric patients etc.)

Pregnancy:

Reported clinical studies in more than 500 pregnant women as well as a large amount of data from post-marketing experience indicate no malformative nor foeto/neonatal toxicity of the active substances. ALGIDUO can be used during pregnancy, if clinically needed.

Breast feeding:

No known effect on breast fed infants. ALGIDUO can be used during breast feeding.

Fertility

No known effect on human fertility.

4.7 Effects on ability to drive and use machines

None.

4.8 Undesirable effects

System Organ Class	Frequency	Adverse Event
Immune System Disorders	Very Rare	Anaphylactic and anaphylactoid reactions. Hypersensitivity reactions such as urticaria
Respiratory, Thoracic and Mediastinal Disorders	Very Rare	Respiratory effects such as bronchospasm.
Gastrointestinal disorders	Uncommon	Diarrhoea Nausea Vomiting

Reporting of adverse reactions

Reporting suspected adverse reactions after authorisation of the medicinal product is important. It allows continued monitoring of the benefit/risk balance of the medicinal product. Report suspected adverse reactions via any point of contact available at www.torrentpharma.com or at email: pv@torrentpharma.com or call on 1800-120-3001.

4.9 Overdose

Symptoms

Symptoms are likely to be minor; some abdominal discomfort may be experienced.

Management

In the event of overdose, symptomatic treatment should be given.

5. Pharmacological properties

5.1 Mechanism of Action

On ingestion the suspension reacts with gastric acid to rapidly form a raft of alginic acid gel having a near-neutral pH which floats on the stomach contents quickly and effectively impeding gastro-oesophageal reflux for up to 4 hours, and protecting the oesophagus from acid, pepsin and bile. In severe cases the raft itself may be refluxed into the oesophagus in preference to the stomach contents and exert a demulcent effect. In addition, in vitro evidence has shown that the raft has a secondary action and is able to entrap bile and pepsin within its structure, further protecting the oesophagus from these gastric components.

5.2 Pharmacodynamic properties

On ingestion the suspension reacts with gastric acid to rapidly form a raft of alginic acid gel having a near-neutral pH which floats on the stomach contents quickly and effectively impeding gastro-oesophageal reflux for up to 4 hours, and protecting the oesophagus from acid, pepsin and bile. In severe cases the raft itself may be refluxed into the oesophagus in preference to the stomach contents and exert a demulcent effect. In addition, in vitro evidence has shown that the raft has a secondary action and is able to entrap bile and pepsin within its structure, further protecting the oesophagus from these gastric components.

5.3 Pharmacokinetic properties

The mode of action of the product is physical and does not depend on absorption into the systemic circulation.

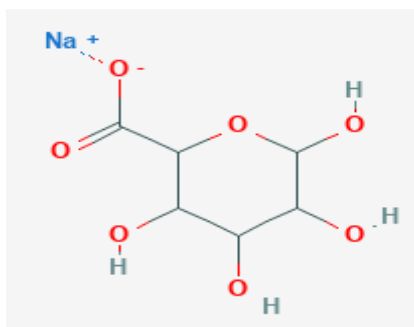
6. Nonclinical properties

6.1 Animal Toxicology or Pharmacology

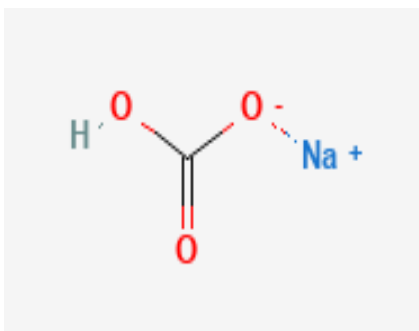
There are no preclinical data of relevance to the prescriber in addition to that included in other sections of the SmPC.

7. Description

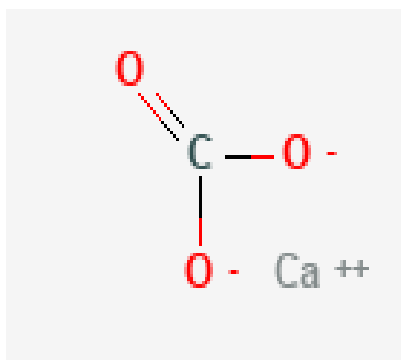
Sodium alginate is sodium;3,4,5,6-tetrahydroxyoxane-2-carboxylate. The empirical formula is $C_6H_9NaO_7$, and its molecular weight is 216.12 g/mol. The chemical structure of Sodium alginate is:



Sodium bicarbonate is sodium, hydrogen carbonate. The empirical formula is NaHCO_3 , and its molecular weight is 84.007 g/mol. The chemical structure of Sodium bicarbonate is:



Calcium carbonate is calcium; carbonate. The empirical formula is CaCO_3 , and its molecular weight is 100.09 g/mol. The chemical structure of Calcium carbonate is:



Algiduo

Alginate Raft-Forming oral Suspension is white to off white colored suspension.

The excipients used are Methyl Paraben, Propyl Paraben, Disodium Edetate, Saccharin Sodium, Sorbitol, Carbomer Homo, Polysorbate-80, Colloidal Silicon Dioxide, Sodium Hydroxide Pellets, Menthol, Propylene Glycol and Citric Acid Monohydrate.

8. Pharmaceutical particulars

8.1 Incompatibilities

None Stated

8.2 Shelf-life

Do not use later than date of expiry.

8.3 Packaging information

Algiduo Oral Suspension is available in bottle pack of 150 ml.

8.4 Storage and handing instructions

Do not store above 30°C.

Keep out of reach of children.

Keep the bottle tightly closed after each use.

Shake well before use.

9. Patient Counselling Information

Ask the patients to inform the treating physicians in case of any of the below:

- Have any allergies
- Have kidney or liver problems
- Are pregnant or plan to become pregnant
- Are breastfeeding or plan to breastfeed
- Have any serious illness
- Are taking any medicines (prescription, over-the-counter, vitamins, or herbal products)

10. Details of manufacturer

Akums Drugs & Pharmaceuticals Ltd.

Plot No. 22, Sec-6A, IIE, SIDCUL,

Ranipur, Haridwar – 249403, Uttarakhand.

11. Details of permission or licence number with date

Mfg. Licence No.: 123/UA/2007 issued on 10.06.2024.

12. Date of revision

MAY 2026

MARKETED BY

TORRENT
PHARMA

TORRENT PHARMACEUTICALS LTD.

IN/ALGIDUO/MAY 2026/02/PI