

For the use of a Registered Medical Practitioner or Hospital or a Laboratory only

Pruvict Liquid®

1. Generic Name

Prucalopride Oral Solution 0.2 mg/mL

2. Qualitative and quantitative Composition:

Each 5 mL contains:

Prucalopride Succinate equivalent to

Prucalopride1.0 mg

Methyl Paraben IP (as preservative).....9.0 mg

Propyl Paraben IP (as preservative).....1.0 mg

Flavored syrupy base.....q.s.

3. Dosage form and strength

Dosage form: Oral Solution

Strength: 0.2 mg/mL

4. Clinical particulars

4.1 Therapeutic indication

It is indicated for the treatment of chronic idiopathic constipation in adults in whom laxatives fail to provide adequate relief.

4.2 Posology and method of administration

Posology

Adults: 2 mg once daily (administered as 10 ml prucalopride oral solution) with or without food, at any time of the day.

Due to the specific mode of action of prucalopride (stimulation of propulsive motility), exceeding the daily dose of 2 mg (administered as 10 ml prucalopride oral solution) is not expected to increase efficacy.

If the intake of once daily prucalopride is not effective after 4 weeks of treatment, the patient should be re-examined and the benefit of continuing treatment reconsidered.

Special populations

Older people (>65 years): Start with 1 mg once daily (administered as 5 ml prucalopride oral solution); if needed the dose can be increased to 2 mg once daily (administered as 10 ml prucalopride oral solution).

Patients with renal impairment: The dose for patients with severe renal impairment (GFR <30 ml/min/1.73 m²) is 1 mg once daily (administered as 5 ml prucalopride oral solution). No dose adjustment is required for patients with mild to moderate renal impairment.

Patients with hepatic impairment: Patients with severe hepatic impairment (Child- Pugh class C) start with 1 mg once daily (administered as 5 ml prucalopride oral solution) which may be increased to 2 mg (administered as 10 ml prucalopride oral solution) if required to improve efficacy and if the 1 mg dose (administered as 5 ml prucalopride oral solution) is

well tolerated. No dose adjustment is required for patients with mild to moderate hepatic impairment.

Paediatric population: Prucalopride should not be used in children and adolescents younger than 18 years.

Method of administration

Oral use

A calibrated measuring device is recommended to measure and deliver the prescribed dose accurately. A household teaspoon or tablespoon is not an adequate measuring device. As per dosing recommendation as per above, Prucalopride solution can be accurately measured and easily administer using 10 ml measuring cap having a 5 ml marking. When using prucalopride oral solution, no dilution is necessary.

4.3 Contraindications

Hypersensitivity to the active substance or to any of the excipients.

Renal impairment requiring dialysis.

Intestinal perforation or obstruction due to structural or functional disorder of the gut wall, obstructive ileus, severe inflammatory conditions of the intestinal tract, such as Crohn's disease, and ulcerative colitis and toxic megacolon/megarectum.

4.4 Special warnings and precautions for use

Renal excretion is the main route of elimination of prucalopride. A dose of 1 mg (administered as 5 ml prucalopride oral solution) is recommended in subjects with severe renal impairment.

Caution should be exercised when prescribing prucalopride oral solution to patients with severe hepatic impairment (Child-Pugh class C) due to limited data in patients with severe hepatic impairment.

There is limited information on the safety and efficacy of prucalopride for use in patients with severe and clinically unstable concomitant disease (e.g. cardiovascular or lung disease, neurological or psychiatric disorders, cancer or AIDS and other endocrine disorders). Caution should be exercised when prescribing Prucalopride to patients with these conditions especially when used in patients with a history of arrhythmias or ischaemic cardiovascular disease.

In case of severe diarrhoea, the efficacy of oral contraceptives may be reduced and the use of an additional contraceptive method is recommended to prevent possible failure of oral contraception.

4.5 Drug interactions

Prucalopride has a low pharmacokinetic interaction potential. It is extensively excreted unchanged in urine (approximately 60% of the dose) and in vitro metabolism is very slow.

Prucalopride did not inhibit specific CYP450 activities in in vitro studies in human liver microsomes at therapeutically relevant concentrations.

Although prucalopride may be a weak substrate for P-glycoprotein (P-gp), it is not an inhibitor of P-gp at clinically relevant concentrations.

Effects of prucalopride on pharmacokinetics of other medicinal products

A 30% increase in plasma concentrations of erythromycin was found during prucalopride co-administration. The mechanism for this interaction is not clear.

Prucalopride had no clinically relevant effects on the pharmacokinetics of warfarin, digoxin, alcohol, paroxetine or oral contraceptives.

Effects of other medicinal products on pharmacokinetics of prucalopride

Ketoconazole (200 mg twice daily), a potent inhibitor of CYP3A4 and of P-gp, increased the systemic exposure to prucalopride by approximately 40%. This effect is too small to be clinically relevant. Interactions of similar magnitude may be expected with other potent inhibitors of P-gp such as verapamil, cyclosporine A and quinidine.

Therapeutic doses of probenecid, cimetidine, erythromycin and paroxetine did not affect the pharmacokinetics of prucalopride.

4.6 Use in special populations (such as pregnant women, lactating women, pediatric patients, Fertility etc.)

Women of childbearing potential

Women of childbearing potential have to use effective contraception during treatment with prucalopride.

Pregnancy

There is a limited amount of data from the use of prucalopride in pregnant women. Cases of spontaneous abortion have been observed during clinical studies, although, in the presence of other risk factors, the relationship to prucalopride is unknown. Animal studies do not indicate direct or indirect harmful effects with respect to reproductive toxicity (including pregnancy, embryonal/foetal development, parturition or postnatal development). Prucalopride is not recommended during pregnancy and in women of childbearing potential not using contraception.

Breast-feeding

A human study has shown that prucalopride is excreted in breast milk. At therapeutic doses of prucalopride, no effects on breast-fed newborns/infants are anticipated. In the absence of human data in women who actively breast-fed while taking Prucalopride, a decision should be made whether to discontinue breast-feeding or to discontinue Prucalopride therapy taking into account the benefit of breast-feeding for the child and the benefit of therapy for the woman.

Fertility

Animal studies indicate that there is no effect on male or female fertility.

4.7 Effects on ability to drive and use machines

Prucalopride may have a minor influence on the ability to drive and use machines, since dizziness and fatigue have been observed in clinical studies, particularly during the first day of treatment.

4.8 Undesirable effects

Summary of the safety profile

In an integrated analysis of 17 double-blind placebo-controlled studies, Prucalopride was given orally to approximately 3,300 patients with chronic constipation. Of these, over 1,500 patients received Prucalopride at the recommended dose of 2 mg per day, while approximately 1,360 patients were treated with 4 mg prucalopride daily. The most frequently reported adverse reactions associated with Prucalopride 2 mg therapy are headache (17.8%) and gastrointestinal symptoms (abdominal pain (13.7%), nausea (13.7%) and diarrhoea (12.0%)). The adverse reactions occur predominantly at the start of

therapy and usually disappear within a few days with continued treatment. Other adverse reactions have been reported occasionally. The majority of adverse events were mild to moderate in intensity.

Tabulated list of adverse reactions

The following adverse reactions were reported in controlled clinical studies at the recommended dose of 2 mg with frequencies corresponding to very common ($\geq 1/10$), common ($\geq 1/100$ to $< 1/10$), uncommon ($\geq 1/1,000$ to $< 1/100$), rare ($\geq 1/10,000$ to $< 1/1,000$) and very rare ($< 1/10,000$) and not known (cannot be estimated from available data). Within each frequency grouping, undesirable effects are presented in order of decreasing seriousness. Frequencies are calculated based on the integrated analysis of 17 double-blind placebo-controlled clinical studies.

Table: Adverse Drug Reactions (ADRs) Associated with Prucalopride		
System/Organ Class	Incidence Category	Adverse Drug Reaction
Metabolism and nutrition disorders	Common	Decreased appetite
Nervous system disorders	Very common	Headache
	Common	Dizziness
	Uncommon	Tremors, migraine
Cardiac disorders	Uncommon	Palpitations
Ear and labyrinth disorders	Uncommon	Vertigo
Gastrointestinal disorders	Very common	Nausea, diarrhoea, abdominal pain
	Common	Vomiting, dyspepsia, flatulence, gastrointestinal sounds abnormal
	Uncommon	Rectal haemorrhage
Renal and urinary disorders	Uncommon	Pollakiuria
General disorders and administration site conditions	Common	Fatigue
	Uncommon	Pyrexia, malaise

Description of selected adverse reactions

After the first day of treatment, the most common adverse reactions were reported in similar frequencies (incidence no more than 1% different between prucalopride and placebo) during Prucalopride therapy as during placebo, with the exception of nausea and diarrhoea that still occurred more frequently during Prucalopride therapy, but less pronounced (differences in incidence between Prucalopride and placebo of 1.3% and 3.4%, respectively).

Palpitations were reported in 0.7% of the placebo patients, 0.9% of the 1 mg prucalopride patients, 0.9% of the 2 mg prucalopride patients and 1.9% of the 4 mg prucalopride patients. The majority of patients continued using prucalopride. As with any new symptom, patients should discuss the new onset of palpitations with their physician.

Reporting of adverse reactions

Reporting suspected adverse reactions after authorisation of the medicinal product is important. It allows continued monitoring of the benefit/risk balance of the medicinal product. Report suspected adverse reactions via any point of contact available at www.torrentpharma.com or at email: pv@torrentpharma.com or call on 1800-120-3001.

4.9 Overdose

In a study in healthy volunteers, treatment with prucalopride was well tolerated when given in an up-titrating scheme up to 20 mg once daily (10 times the recommended therapeutic dose). An overdose may result in symptoms resulting from an exaggeration of prucalopride's known pharmacodynamic effects and include headache, nausea and diarrhoea. Specific treatment is not available for prucalopride overdose. Should an overdose occur, the patient should be treated symptomatically and supportive measures instituted, as required. Extensive fluid loss by diarrhoea or vomiting may require correction of electrolyte disturbances.

5 Pharmacological properties

5.1 Pharmacodynamic properties

Mechanism of Action

Prucalopride is a dihydrobenzofurancarboxamide with gastrointestinal prokinetic activities. Prucalopride is a selective, high affinity serotonin (5-HT₄) receptor agonist, which is likely to explain its prokinetic effects. In vitro, only at concentrations exceeding its 5-HT₄ receptor affinity by at least 150-fold, affinity for other receptors was detected. In rats, prucalopride in vivo, at doses above 5 mg/kg (at and above 30-70 times the clinical exposure), induced hyperprolactinaemia caused by an antagonistic action at the D₂ receptor.

In dogs, prucalopride alters colonic motility patterns via serotonin 5-HT₄ receptor stimulation: it stimulates proximal colonic motility, enhances gastroduodenal motility and accelerates delayed gastric emptying. Furthermore, giant migrating contractions are induced by prucalopride. These are equivalent to the colonic mass movements in humans, and provide the main propulsive force to defecation. In dogs, the effects observed in the gastrointestinal tract are sensitive to blockade with selective 5-HT₄ receptor antagonists illustrating that the observed effects are exerted via selective action on 5-HT₄ receptors.

These pharmacodynamic effects of prucalopride have been confirmed in human subjects with chronic constipation using manometry in an open-label, randomised, crossover, reader-blinded study investigating the effect of prucalopride 2 mg and an osmotic laxative on colon motility as determined by the number of colonic high amplitude propagating contractions (HAPCs, also known as giant migrating contractions). Compared with a constipation treatment working through osmotic action, prokinetic stimulation with prucalopride increased colonic motility as measured by the number of HAPCs during the first 12 hours after intake of the investigational product. The clinical significance or benefit of this mechanism of action when compared with other laxatives has not been investigated.

Clinical efficacy and safety

Adult population

The efficacy of prucalopride was established in three multicentre, randomised, double-blind, 12-week placebo-controlled studies in subjects with chronic constipation (n=1,279 on prucalopride, 1,124 females, 155 males). The prucalopride doses studied in each of these three studies included 2 mg and 4 mg once daily. The primary efficacy endpoint was the

proportion (%) of subjects that reached normalisation of bowel movements defined as an average of three or more spontaneous, complete bowel movements (SCBM) per week over the 12-week treatment period.

The proportion of female patients in whom laxatives fail to provide adequate relief treated with the recommended dose of 2 mg prucalopride (n=458) that reached an average of ≥ 3 SCBM per week was 31.0% (week 4) and 24.7% (week 12), versus 8.6% (week 4) and 9.2% (week 12) on placebo. A clinically meaningful improvement of ≥ 1 SCBM per week, the most important secondary efficacy endpoint, was achieved in 51.0% (week 4) and 44.2% (week 12) treated with 2 mg prucalopride versus 21.7% (week 4) and 22.6% (week 12) of placebo patients.

The effect of prucalopride on spontaneous bowel movements (SBM) also proved to be statistically superior to placebo for the portion of patients that had an increase of ≥ 1 SBM/week over the 12-week treatment period. At week 12, 68.3% of patients treated with 2 mg prucalopride had an average increase of ≥ 1 SBM/week versus 37.0% of placebo patients ($p < 0.001$ vs placebo).

In all three studies, treatment with prucalopride also resulted in significant improvements in a validated and disease specific set of symptom measures (PACSYM), including abdominal (bloating, discomfort, pain and cramps), stool (incomplete bowel movements, false alarm, straining, too hard, too small) and rectal symptoms (painful bowel movements, burning, bleeding/tearing), determined at week 4 and week 12. At week 4, the proportion of patients with an improvement of ≥ 1 versus baseline in the PAC-SYM abdominal, stool, and rectal symptom subscales was 41.3%, 41.6%, and 31.3% respectively in patients treated with prucalopride 2 mg compared with 26.9%, 24.4% and 22.9% in patients on placebo. Similar results were observed at Week 12: 43.4%, 42.9%, and 31.7% respectively in 2 mg prucalopride patients versus 26.9%, 27.2%, and 23.4% in placebo patients ($p < 0.001$ vs placebo). A significant benefit on a number of Quality of Life measures, such as degree of satisfaction with treatment and with bowel habits, physical and psychosocial discomfort and worries and concerns, was also observed at both the 4 and 12 week assessment time points. At Week 4, the proportion of patients with an improvement of ≥ 1 versus baseline in the Patient Assessment of Constipation-Quality of Life satisfaction subscale (PAC-QOL) was 47.7% in patients treated with prucalopride 2 mg compared with 20.2% in patients on placebo. Similar results were observed at Week 12: 46.9% in 2 mg prucalopride patients versus 19.0% in placebo patients ($p < 0.001$ vs placebo).

In addition, the efficacy, safety and tolerability of prucalopride in male patients with chronic constipation were evaluated in a 12-week, multi-centre, randomised, doubleblind, placebo-controlled study (N=370). The primary endpoint of the study was met: a statistically significantly higher percentage of subjects in the prucalopride group (37.9%) had an average of ≥ 3 SCBMs/week compared with subjects in the placebo treatment group (17.7%) ($p < 0.0001$) over the 12-week double-blind treatment period. The safety profile of prucalopride was consistent with that seen in female patients.

Long-term study

The efficacy and safety of prucalopride in patients (aged ≥ 18 or older) with chronic constipation, were evaluated in a 24 week multicentre, randomised, double-blind, placebo controlled study (N=361). The proportion of patients with an average weekly frequency of ≥ 3 Spontaneous Complete Bowel Movements (SCBMs) per week (i.e., responders) over the 24-week double-blind treatment phase was not statistically different ($p = 0.367$) between the prucalopride (25.1%) and placebo (20.7%) treatment groups. The difference between treatment groups in the average weekly frequency of ≥ 3 SCBMs per week was not statistically significant over Weeks 1-12 which is inconsistent with the 5 other

multicentre, randomised, double-blind, 12-week placebo controlled studies demonstrating efficacy at this timepoint in adult patients. The study is therefore considered to be inconclusive with respect to efficacy. However, the totality of the data including the other double-blind placebo controlled 12 week studies support the efficacy of prucalopride. The safety profile of prucalopride in this 24 week study was consistent with that seen in the previous 12 week studies. Prucalopride has been shown not to cause rebound phenomena, nor to induce dependency.

TQT study

A thorough QT study was performed to evaluate the effects of prucalopride on the QT interval at therapeutic (2 mg) and suprathreshold doses (10 mg) and compared with the effects of placebo and a positive control. This study did not show significant differences between prucalopride and placebo at either dose, based on mean QT measurements and outlier analysis. This confirmed the results of two placebo controlled QT studies. In double-blind clinical studies, the incidence of QT-related adverse events and ventricular arrhythmias was low and comparable to placebo.

Paediatric population

The efficacy and safety of prucalopride in paediatric patients (aged 6 months to 18 years) with functional constipation, were evaluated in an 8-week double-blind, placebo-controlled trial (N=213), followed by a 16 week open-label comparatorcontrolled (Polyethylene glycol 4000) study of up to 24 weeks (N=197). The starting dose administered was 0.04 mg/kg/day titrated between 0.02 and 0.06 mg/kg/day (to a maximum of 2 mg daily) for children weighing ≤ 50 kg given as an oral solution of prucalopride or matching placebo. Children weighing >50 kg received 2 mg/day prucalopride or matching placebo.

Response to the treatment was defined as having an average of ≥ 3 spontaneous bowel movements (SBMs) per week and an average number of faecal incontinence episodes of ≤ 1 per 2 weeks. The results of the study showed no difference in efficacy between prucalopride and placebo with response rates of 17% and 17.8% respectively (P=0.9002). Prucalopride was generally well tolerated. The incidence of subjects with at least 1 treatment-emergent adverse event (TEAE) was similar between the prucalopride treatment group (69.8%) and the placebo treatment group (60.7%). Overall, the safety profile of prucalopride in children was the same as in adults.

5.2 Pharmacokinetic properties

Absorption

Prucalopride is rapidly absorbed; after a single oral dose of 2 mg in healthy subjects, C_{max} was attained in 2-3 hours. The absolute oral bioavailability is $>90\%$. Concomitant intake of food does not influence the oral bioavailability of prucalopride.

Distribution

Prucalopride is extensively distributed, and has a steady-state volume of distribution (V_{d_{ss}}) of 567 litres. The plasma protein binding of prucalopride is about 30%.

Biotransformation

Metabolism is not the major route of elimination of prucalopride. In vitro, human liver metabolism is very slow and only minor amounts of metabolites are found. In an oral dose study with radiolabelled prucalopride in man, small amounts of seven metabolites were recovered in urine and faeces. The quantitatively most important metabolite in excreta, R107504, accounted for 3.2% and 3.1% of the dose in urine and faeces, respectively. Other metabolites identified and quantified in urine and faeces were R084536 (formed by N-

dealkylation) accounting for 3% of the dose and products of hydroxylation (3% of the dose) and N-oxidation (2% of the dose). Unchanged active substance made up about 92-94% of the total radioactivity in plasma. R107504, R084536 and R104065 (formed by O-demethylation) were identified as minor plasma metabolites.

Elimination

A large fraction of the active substance is excreted unchanged (60-65% of the administered dose in urine and about 5% in faeces). Renal excretion of unchanged prucalopride involves both passive filtration and active secretion. The plasma clearance of prucalopride averages 317 ml/min. Its terminal half-life is about one day. Steady-state is reached within three to four days. On once daily treatment with 2 mg prucalopride, steady-state plasma concentrations fluctuate between trough and peak values of 2.5 and 7 ng/ml, respectively. The accumulation ratio after once daily dosing ranged from 1.9 to 2.3. The pharmacokinetics of prucalopride is dose proportional within and beyond the therapeutic range (tested up to 20 mg). Prucalopride o.d. displays time-independent kinetics during prolonged treatment.

Special populations

Population pharmacokinetics

A population pharmacokinetic analysis showed that the apparent total clearance of prucalopride was correlated with creatinine clearance, but that age, body weight, sex or race had no influence.

Older people

After once daily dosing of 1 mg, peak plasma concentrations and AUC of prucalopride in older people were 26% to 28% higher than in young adults. This effect can be attributed to a diminished renal function in older people.

Renal impairment

Compared to subjects with normal renal function, plasma concentrations of prucalopride after a single 2 mg dose were on average 25% and 51% higher in subjects with mild (C_{ICR} 50-79 ml/min) and moderate (C_{ICR} 25-49 ml/min) renal impairment, respectively. In subjects with severe renal impairment (C_{ICR} ≤24 ml/min), plasma concentrations were 2.3 times the levels in healthy subjects.

Hepatic impairment

Non-renal elimination contributes to about 35% of total elimination. In a small pharmacokinetic study, the C_{max} and AUC of prucalopride were, on average, 10- 20% higher in patients with moderate to severe hepatic impairment compared with healthy subjects.

6 Nonclinical properties

6.1 Animal Toxicology or Pharmacology

Non-clinical data reveal no special hazard for humans based on conventional studies of safety pharmacology, repeated dose toxicity, genotoxicity, carcinogenic potential, and toxicity to reproduction and development. An extended series of safety pharmacology studies with special emphasis on cardiovascular parameters showed no relevant changes in haemodynamic and ECG derived parameters (QTC) with the exception of a modest increase in heart rate and blood pressure observed in anaesthetised pigs after intravenous administration, and an increase in blood pressure in conscious dogs after bolus intravenous administration, which was not observed either in anaesthetised dogs or after oral

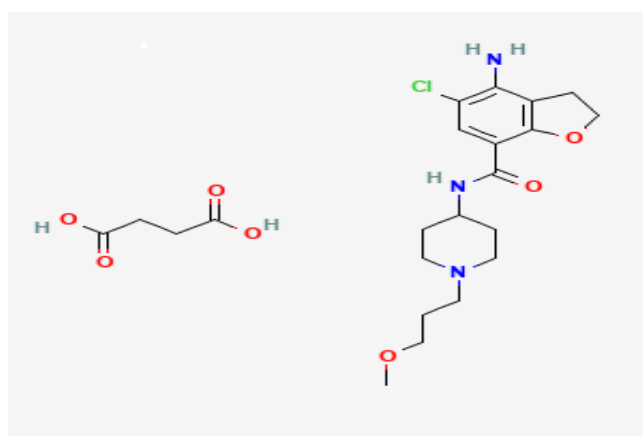
administration in dogs reaching similar plasma levels. A subcutaneous neonatal/juvenile toxicity study performed in rats 7-55 days of age resulted in a NOAEL of 10 mg/kg/day. The AUC_{0-24h} exposure ratios at the NOAEL versus human children (dosed at approximately 0.04 mg/kg daily) ranged between 21 and 71 providing adequate safety margins for the clinical dose.

7 Description

Prucalopride Succinate:

4-amino-5-chloro-N-[1-(3-methoxypropyl)piperidine-4-yl]-2,3-dihydro-1-benzofuran-7-carboxamide;butanedioic acid.

The empirical formula is C₁₈H₂₆ClN₃O₃.C₄H₆O₄ and its molecular weight is 485.96 g/mol. Solubility: Solubility in N,N-dimethyl formamide, Sulfinylbismethane and N,N-dimethyl acetamide and sparingly soluble in methanol. In addition prucalopride succinate is freely soluble in acidic aqueous media. The chemical structural formula is.



Prucalopride Oral Solution 0.2 mg/ml

Clear Orange color liquid free from visible Particulate matter.

The excipients used are Methyl Paraben, Propyl Paraben, Citric Acid Mono. Hyd., Sodium Citrate, Glycerin, Propylene Glycol, Sorbitol Solution, Sucralose, Sunset Yellow Colour, Flavor Orange 501071 AP0551 and Purified Water.

8 Pharmaceutical particulars

8.1 Incompatibilities

Not applicable

8.2 Shelf-life

Do not use later than date of expiry.

8.3 Packaging information

Prucalopride Oral Solution to be supplied in 150 ml PET Amber bottle with 10 ml measuring cup with 5 ml marking into the cap for Prucalopride solution.

8.4 Storage and handing instructions

STORE AT TEMPERATURE NOT EXCEEDING 30°C.

Keep the medicine out of reach of children.

9 Patient Counselling Information

Ask the patients to inform the treating physicians in case of any of the below:

- Have any allergies
- Have kidney or liver problems
- Are pregnant or plan to become pregnant
- Are breastfeeding or plan to breastfeed
- Have any serious illness
- Are taking any medicines (prescription, over-the-counter, vitamins, or herbal products)

10 Details of manufacturer

Torrent Pharmaceuticals Ltd.

Indrad-382721, Dist. Mehsana, INDIA

At: Plot No. 21-22, Pharmacity,

Selaqui, Dist. Dehradun – 248011

Uttarakhand, INDIA

11 Details of permission or licence number with date

Mfg. Licence No.: 90/UA/LL/2017

12. Date of revision

NA

MARKETED BY

TORRENT
PHARMA

TORRENT PHARMACEUTICALS LTD.

IN/Pruvict Liquid 0.2 mg/mL/APR-2026/01/PI