

For the use of Oncologist or a Hospital or a Laboratory

---

---

**TORTAXEL**

---

---

**1) Generic Name**

Paclitaxel Injection I.P.

**2) Qualitative and quantitative Composition:**

**TORTAXEL 30**

Each ml contains:

Paclitaxel I.P. .... 6 mg

Polyoxyl 35

Castor Oil I.P. .... 527 mg

(Cremophor ELP)

Dehydrated Alcohol I.P. .... 49.7% v/v

**TORTAXEL 100**

Each ml contains:

Paclitaxel I.P. .... 6 mg

Polyoxyl 35 Castor Oil I.P. .... 527 mg

(Cremophor ELP)

Dehydrated Alcohol I.P. .... 49.7% v/v

**TORTAXEL 260**

Each ml contains :

Paclitaxel I.P. .... 6 mg

Polyoxyl 35 Castor Oil I.P. .... 527 mg

(Cremophor ELP)

Dehydrated Alcohol I.P. .... 49.7% v/v

The list of excipients used is Polyoxyl 35 Castor Oil, Absolute Alcohol, Citric Acid Anhydrous.

**3) Dosage form and strength**

**Dosage form:** Injection

**Strength:** 30 mg/5ml, 100mg/16.67 ml and 260 mg/43.34 ml

**4) Clinical particulars**

**4.1. Therapeutic indication**

Paclitaxel is indicated as first-line and subsequent therapy for the treatment of advanced carcinoma of the ovary. As first-line therapy is indicated in combination with cisplatin. Paclitaxel is indicated for the adjuvant treatment of node-positive breast cancer administered sequentially to standard doxorubicin-containing combination chemotherapy. Paclitaxel is indicated for the treatment of breast cancer after failure of combination chemotherapy for metastatic disease or relapse within 6 months of adjuvant chemotherapy. Prior therapy should

have included an anthracycline unless clinically contraindicated. Paclitaxel in combination with cisplatin, is indicated for the first-line treatment of non-small cell lung cancer in patients who are not candidates for potentially curative surgery and/or radiation therapy. Paclitaxel is indicated for the second-line treatment of AIDS-related Kaposi's sarcoma.

#### 4.2. Posology and method of administration

##### *Posology:*

**Note:** Contact of the undiluted concentrate with plasticized PVC equipment or devices used to prepare solutions for infusion is not recommended. In order to minimize patient exposure to the plasticizer DEHP [di-(2-ethylhexyl) phthalate], which may be leached from PVC infusion bags or sets, diluted paclitaxel solutions should be stored in bottles (glass, polypropylene) or plastic bags (polypropylene, polyolefin) and administered through polyethylene-lined administration sets. All patients should be premedicated prior to paclitaxel administration in order to prevent severe hypersensitivity reactions. Such premedication may consist of dexamethasone 20 mg PO administered approximately 12 and 6 hours before paclitaxel, diphenhydramine (or its equivalent) 50 mg IV 30 to 60 minutes prior to paclitaxel, and cimetidine (300 mg) or ranitidine (50 mg) IV 30 to 60 minutes before paclitaxel.

*For patients with carcinoma of the ovary, the following regimens are recommended:*

- For previously untreated patients with carcinoma of the ovary, one of the following recommended regimens may be given every 3 weeks. In selecting the appropriate regimen, differences in toxicities should be considered.
  - Paclitaxel administered intravenously over 3 hours at a dose of 175 mg/m<sup>2</sup> followed by cisplatin at a dose of 75 mg/m<sup>2</sup>; or ,
  - Paclitaxel administered intravenously over 24 hours at a dose of 135 mg/m<sup>2</sup> followed by cisplatin at a dose of 75 mg/m<sup>2</sup>.
- In patients previously treated with chemotherapy for carcinoma of the ovary, paclitaxel has been used at several doses and schedules; however, the optimal regimen is not yet clear. The recommended regimen is paclitaxel 135 mg/m<sup>2</sup> or 175 mg/m<sup>2</sup> administered intravenously over 3 hours every 3 weeks.

*For patients with carcinoma of the breast, the following regimens are recommended:*

- For the adjuvant treatment of node-positive breast cancer, the recommended regimen is paclitaxel, at a dose of 175 mg/m<sup>2</sup> intravenously over 3 hours every 3 weeks for 4 courses administered sequentially to doxorubicin-containing combination chemotherapy. The clinical trial used 4 courses of doxorubicin and cyclophosphamide.
- After failure of initial chemotherapy for metastatic disease or relapse within 6 months of adjuvant chemotherapy, paclitaxel at a dose of 175 mg/m<sup>2</sup> administered intravenously over 3 hours every 3 weeks has been shown to be effective.

For patients with non-small cell lung carcinoma, the recommended regimen, given every 3 weeks, is Paclitaxel administered intravenously over 24 hours at a dose of 135 mg/m<sup>2</sup> followed by cisplatin, 75 mg/m<sup>2</sup>.

For patients with AIDS related Kaposi's sarcoma, paclitaxel administered at a dose of 135 mg/m<sup>2</sup> given intravenously over 3 hours every 3 weeks or at a dose of 100 mg/m<sup>2</sup> given intravenously over 3 hours every 2 weeks is recommended (dose intensity 45–50 mg/m<sup>2</sup>/week). In the 2 clinical trials evaluating these schedules, the former schedule (135 mg/m<sup>2</sup> every 3 weeks) was more toxic than the latter. In addition, all patients with low performance status were treated with the latter schedule (100 mg/m<sup>2</sup> every 2 weeks).

Based upon the immunosuppression in patients with advanced HIV disease, the following modifications are recommended in these patients:

- Reduce the dose of dexamethasone as 1 of the 3 premedication drugs to 10 mg PO (instead of 20 mg PO);
- Initiate or repeat treatment with paclitaxel only if the neutrophil count is at least 1000 cells/mm<sup>3</sup>;
- Reduce the dose of subsequent courses of paclitaxel by 20% for patients who experience severe neutropenia (neutrophil <500 cells/mm<sup>3</sup> for a week or longer); and.
- Initiate concomitant hematopoietic growth factor (G-CSF) as clinically indicated.

Initiate concomitant hematopoietic growth factor (G-CSF) as clinically indicated. For the therapy of patients with solid tumors (ovary, breast, and NSCLC), courses of paclitaxel should not be repeated, until the neutrophil count is at least 1500 cells/mm<sup>3</sup> and the platelet count is at least 100,000 cells/mm<sup>3</sup>.

Paclitaxel should not be given to patients with AIDS-related Kaposi's sarcoma if the baseline or subsequent neutrophil count is less than 1000 cells/mm<sup>3</sup>.

Patients who experience severe neutropenia (neutrophil <500 cells/mm<sup>3</sup> for a week or longer) or severe peripheral neuropathy during paclitaxel therapy should have dosage reduced by 20% for subsequent courses of paclitaxel. The incidence of neurotoxicity and the severity of neutropenia increase with dose.

#### *Hepatic Impairment*

Inadequate data are available to recommend dosage alterations in patients with mild to moderate hepatic impairments. Paclitaxel is not recommended in patients with severely impaired hepatic function. Patients with hepatic impairment may be at increased risk of toxicity, particularly grade III-IV myelosuppression. There is no evidence that the toxicity of paclitaxel is increased when given as a 3-hour infusion to patients with mildly abnormal liver function. No data are available for patients with severe baseline cholestasis. When paclitaxel is given as a longer infusion, increased myelosuppression may be seen in patients with moderate to severe hepatic impairment. Patients should be monitored closely for the development of profound myelosuppression. Inadequate data are available to recommend dosage alterations in patients with mild to moderate hepatic impairments. Paclitaxel is not recommended in patients with severely impaired hepatic function.

#### ***Method of administration:***

##### Preparation and Administration Precautions

Procedures for proper handling and disposal of anticancer drugs should be considered. To minimize the risk of dermal exposure, always wear impervious gloves when handling vials containing paclitaxel Injection. If paclitaxel solution contacts the skin, wash the skin immediately and thoroughly with soap and water. Following topical exposure, events have included tingling, burning, and redness. If paclitaxel contacts mucous membranes, the membranes should be flushed thoroughly with water. Upon inhalation, dyspnea, chest pain, burning eyes, sore throat, and nausea have been reported. Given the possibility of extravasation, it is advisable to closely monitor the infusion site for possible infiltration during drug administration.

##### Preparation for Intravenous Administration

TORTAXEL (Paclitaxel Injection I.P.) must be diluted prior to infusion. Paclitaxel should be diluted in 0.9% Sodium Chloride Injection, I.P.; 5% Dextrose Injection, I.P.; 5% Dextrose and

0.9% Sodium Chloride Injection, I.P.; or 5% Dextrose in Ringer's Injection to a final concentration of 0.3 to 1.2 mg/mL. The solutions are physically and chemically stable for up to 27 hours at ambient temperature (approximately 25°C) and room lighting conditions. Parenteral drug products should be inspected visually for particulate matter and discoloration prior to administration whenever solution and container permit. Upon preparation, solutions may show haziness, which is attributed to the formulation vehicle. No significant losses in potency have been noted following simulated delivery of the solution through IV tubing containing an in-line (0.22 micron) filter. Data collected for the presence of the extractable plasticizer DEHP [di-(2-ethylhexyl) phthalate] show that levels increase with time and concentration when dilutions are prepared in PVC containers. Consequently, the use of plasticized PVC containers and administration sets is not recommended. Paclitaxel solutions should be prepared and stored in glass, polypropylene, or polyolefin containers. Non-PVC containing administration sets, such as those which are polyethylene-lined, should be used. Paclitaxel injection should be administered through an in-line filter with a microporous membrane not greater than 0.22 microns. Use of filter devices such as IVEX-2® filters which incorporate short inlet and outlet PVC coated tubing has not resulted in significant leaching of DEHP. The Chemo Dispensing Pin™ device or similar devices with spikes should not be used with vials of paclitaxel Injection since they can cause the stopper to collapse resulting in loss of sterile integrity of the paclitaxel solution.

### **CAUTIONS**

The drug should be administered with caution in the following patients, Paclitaxel Injection should be administered under the supervision of a physician experienced in the use of cancer chemotherapeutic agents. Patients receiving Paclitaxel Injection should be pretreated with corticosteroids, antihistamines, and H<sub>2</sub> antagonists (such as dexamethasone, diphenhydramine and cimetidine or ranitidine) to minimize hypersensitivity reactions. Severe hypersensitivity reactions characterized by dyspnea and hypotension requiring treatment, angioedema, and generalized urticaria have occurred in patients receiving Paclitaxel Injection. These reactions are probably histamine mediated. One of these reactions was fatal in a patient treated without premedication. Patients who experience severe hypersensitivity reactions to Paclitaxel Injection should not be rechallenged with the drug. Bone marrow suppression (primarily neutropenia) is dose-dependent and is the dose-limiting toxicity. Neutrophil nadirs occurred at a median of 11 days. Frequent monitoring of blood counts should be instituted during Paclitaxel Injection treatment. Patients should not be treated with subsequent cycles of Paclitaxel Injection until neutrophils recover to a level > 1,500 cells/mm<sup>3</sup> and platelets recover to a level > 100,000 cells/mm<sup>3</sup>.

### **4.3. Contraindications**

- Hypersensitivity to the active substance or to any of the excipients, especially Polyoxyethylated 35 castor oil (Macrogolglycerol ricinoleate 35)
- Lactation.
- Patients with baseline neutrophils < 1,500/mm<sup>3</sup> (<1,000/mm<sup>3</sup> for KS patients).
- In KS, patients with concurrent, serious, uncontrolled infections.

### **4.4. Special warnings and precautions for use**

Paclitaxel should be administered under the supervision of a physician experienced in the use of cancer chemotherapeutic agents. Since significant hypersensitivity reactions may occur, appropriate supportive equipment should be available.

Given the possibility of extravasation, it is advisable to closely monitor the infusion site for possible infiltration during drug administration.

Patients must be pretreated with corticosteroids, antihistamines, and H<sub>2</sub>-antagonists.

Paclitaxel should be given before cisplatin when used in combination.

**Significant hypersensitivity reactions** characterised by dyspnoea and hypotension requiring treatment, angioedema and generalised urticaria have occurred in < 1% of patients receiving paclitaxel after adequate premedication. These reactions are probably histamine-mediated. In the case of severe hypersensitivity reactions, paclitaxel infusion should be discontinued immediately, symptomatic therapy should be initiated, and the patient should not be rechallenged with the drug.

**Bone marrow suppression** (primarily neutropenia) is the dose-limiting toxicity. Frequent monitoring of blood counts should be instituted. Patients should not be retreated until neutrophils recover to  $\geq 1,500/\text{mm}^3$  ( $\geq 1,000/\text{mm}^3$  for KS patients) and platelets recover to  $\geq 100,000/\text{mm}^3$  ( $\geq 75,000/\text{mm}^3$  for KS patients). In the KS clinical study, the majority of patients were receiving granulocyte colony stimulating factor (G-CSF).

**Patients with severe neutropenia** (< 500 cells/mm<sup>3</sup> for 7 days or more) during a course of paclitaxel or neutropenic sepsis should have their dose of paclitaxel reduced for subsequent courses of paclitaxel.

**Patients with hepatic impairment** may be at increased risk of toxicity, particularly grade III-IV myelosuppression. There is no evidence that the toxicity of paclitaxel is increased when given as a 3-hour infusion to patients with mildly abnormal liver function. When paclitaxel is given as a longer infusion, increased myelosuppression may be seen in patients with moderate to severe hepatic impairment. Patients should be monitored closely for the development of profound myelosuppression. Inadequate data are available to recommend dosage alterations in patients with mild to moderate hepatic impairments.

No data are available for patients with severe baseline cholestasis. Patients with severe hepatic impairment should not be treated with paclitaxel.

**Severe cardiac conduction abnormalities** have been reported rarely with single agent paclitaxel. If patients develop significant cardiac conduction abnormalities during paclitaxel administration, appropriate therapy should be administered, and continuous cardiac monitoring should be performed during subsequent therapy with paclitaxel. Hypotension, hypertension, and bradycardia have been observed during paclitaxel administration; patients are usually asymptomatic and generally do not require treatment. Frequent vital sign monitoring, particularly during the first hour of paclitaxel infusion, is recommended. Severe cardiovascular events were observed more frequently in patients with NSCLC than breast or ovarian carcinoma. A single case of heart failure related to paclitaxel was seen in the AIDS-KS clinical study.

When paclitaxel is used in combination with doxorubicin or trastuzumab for initial treatment of metastatic breast cancer, attention should be placed on the monitoring of cardiac function. When patients are candidates for treatment with paclitaxel in these combinations, they should undergo baseline cardiac assessment including history, physical examination, ECG, echocardiogram, and/or MUGA scan. Cardiac function should be further monitored during treatment (e.g. every three months). Monitoring may help to identify patients who develop cardiac dysfunction and treating physicians should carefully assess the cumulative dose (mg/m<sup>2</sup>) of anthracycline administered when making decisions regarding frequency of ventricular function assessment. When testing indicates deterioration in cardiac function, even asymptomatic, treating physicians should carefully assess the clinical benefits of further therapy against the potential for producing cardiac damage, including potentially irreversible damage. If further treatment is administered, monitoring of cardiac function should be more frequent (e.g. every 1-2 cycles).

Although the occurrence of **peripheral neuropathy** is frequent, the development of severe symptoms is rare. In severe cases, a dose reduction of 20% (25% for KS patients) for all subsequent courses of paclitaxel is recommended. In NSCLC patients and in ovarian cancer patients treated in the first-line setting, the administration of paclitaxel as a three-hour infusion in combination with cisplatin, resulted in a greater incidence of severe neurotoxicity than both single agent paclitaxel and cyclophosphamide followed by cisplatin.

### **Others**

Special care should be taken to avoid intra-arterial application of paclitaxel, since in animal studies testing for local tolerance severe tissue reactions were observed after intra-arterial application.

Paclitaxel in combination with radiation of the lung, irrespective of their chronological order, may contribute to the development of *interstitial pneumonitis*.

Since paclitaxel concentrate for solution for infusion contains ethanol (392 mg/ml), consideration should be given to possible CNS and other effects.

Paclitaxel concentrate for solution for infusion contains Polyoxyl Castor oil, which may cause severe allergic reactions.

**Pseudomembranous colitis** has been rarely reported including cases in patients who have not been concomitantly treated with antibiotics. This reaction should be considered in the differential diagnosis of cases of severe or persistent diarrhoea occurring during or shortly after treatment with paclitaxel.

In KS patients, severe mucositis is rare. If severe reactions occur, the paclitaxel dose should be reduced by 25%.

Paclitaxel has shown to be teratogenic, embryotoxic and mutagenic in many experimental systems.

Therefore, sexually active fertile female and male patients should use effective methods of contraception during treatment and up to six months after treatment for men and women. Hormonal contraception is contraindicated in hormone receptor positive tumors.

## **4.5. Drugs interactions**

The recommended regimen of paclitaxel administration for the first-line chemotherapy of ovarian carcinoma is for paclitaxel to be given before cisplatin.

When paclitaxel is given before cisplatin, the safety profile of paclitaxel is consistent with that reported for single-agent use. When paclitaxel was given after cisplatin, patients showed a more profound myelosuppression and an approximately 20% decrease in paclitaxel clearance. Patients treated with paclitaxel and cisplatin may have an increased risk of renal failure as compared to cisplatin alone in gynaecological cancers.

Since the elimination of doxorubicin and its active metabolites can be reduced when paclitaxel and doxorubicin are given closer in time, paclitaxel for initial treatment of metastatic breast cancer should be administered 24 hours after doxorubicin.

The metabolism of paclitaxel is catalysed, in part, by cytochrome P450 isoenzymes CYP2C8 and 3A4. Clinical studies have demonstrated that CYP2C8-mediated metabolism of paclitaxel, to 6 $\alpha$ - hydroxypaclitaxel, is the major metabolic pathway in humans. Concurrent administration of ketoconazole, a known potent inhibitor of CYP3A4, does not inhibit the elimination of paclitaxel in patients; thus, both medicinal products may be administered together without dosage adjustment. Further data on the potential of drug interactions between paclitaxel and other CYP3A4 substrates/inhibitors are limited. Therefore, caution should be

exercised when administering paclitaxel concomitantly with medicines known to inhibit (e.g. erythromycin, fluoxetine, gemfibrozil) or induce (e.g. rifampicin, carbamazepine, phenytoin, phenobarbital, efavirenz, nevirapine) either CYP2C8 or CYP3A4.

Paclitaxel clearance is not affected by cimetidine premedication.

Studies in KS patients, who were taking multiple concomitant medications, suggest that the systemic clearance of paclitaxel was significantly lower in the presence of nelfinavir and ritonavir, but not with indinavir. Insufficient information is available on interactions with other protease inhibitors. Consequently, paclitaxel should be administered with caution in patients receiving protease inhibitors as concomitant therapy.

#### **4.6. Use in special populations (such as pregnant women, lactating women, paediatric patients, geriatric patients etc.)**

##### Pregnancy

There is no adequate information on the use of paclitaxel in pregnant women. Paclitaxel has been shown to be embryotoxic and foetotoxic in rabbits, and to decrease fertility in rats.

As with other cytotoxic drugs, paclitaxel may cause foetal harm, and is therefore contraindicated during pregnancy. Women should be advised to avoid becoming pregnant during therapy with paclitaxel, and to inform the treating physician immediately should this occur. Female and male patients of fertile age, and/or their partners should use contraceptions for at least 6 months after treatment with paclitaxel.

##### Breast-feeding

Paclitaxel is contraindicated during lactation. It is not known whether paclitaxel is excreted in human milk. Breastfeeding should be discontinued for the duration of therapy.

##### Fertility

Paclitaxel has been shown to reduce fertility in rats. Male patients should seek advice regarding cryoconservation of sperm prior to treatment with paclitaxel because of the possibility of infertility.

#### **4.7. Effects on ability to drive and use machines.**

Paclitaxel has not been demonstrated to interfere with this ability. However, it should be noted that paclitaxel does contain alcohol.

#### **4.8. Undesirable effects**

Unless otherwise noted, the following discussion refers to the overall safety database of 812 patients with solid tumours treated with single-agent paclitaxel in clinical studies. As the KS population is very specific, a special chapter based on a clinical study with 107 patients, is presented at the end of this section.

The frequency and severity of undesirable effects, unless otherwise mentioned, are generally similar between patients receiving paclitaxel for the treatment of ovarian carcinoma, breast carcinoma, or NSCLC. None of the observed toxicities were clearly influenced by ag.

**A significant hypersensitivity reaction** with possible fatal outcome (defined as hypotension requiring therapy, angioedema, respiratory distress requiring bronchodilator therapy, or generalised urticaria) occurred in two (<1%) of patients. Thirty-four percent of patients (17% of all courses) experienced minor hypersensitivity reactions. These minor reactions, mainly flushing and rash, did not require therapeutic intervention nor did they prevent continuation of paclitaxel therapy.

The most frequent significant undesirable effect was **bone marrow suppression**. Severe neutropenia (<500 cells/mm<sup>3</sup>) occurred in 28% of patients but was not associated with febrile episodes. Only 1% of patients experienced severe neutropenia for ≥7 days. Thrombocytopenia was reported in 11% of patients. Three percent of patients had a platelet count nadir <50,000/mm<sup>3</sup> at least once while on study. Anaemia was observed in 64% of patients but was severe (Hb <5 mmol/l) in only 6% of patients. Incidence and severity of anaemia is related to baseline haemoglobin status.

**Neurotoxicity**, mainly **peripheral neuropathy**, appeared to be more frequent and severe with a 175 mg/m<sup>2</sup> 3-hour infusion (85% neurotoxicity, 15% severe) than with a 135 mg/m<sup>2</sup> 24-hour infusion (25% peripheral neuropathy, 3% severe) when paclitaxel was combined with cisplatin. In NSCLC patients and in ovarian cancer patients treated with paclitaxel over 3 hours followed by cisplatin, there is an apparent increase in the incidence of severe neurotoxicity. Peripheral neuropathy can occur following the first course and can worsen with increasing exposure to paclitaxel. Peripheral neuropathy was the cause of paclitaxel discontinuation in a few cases. Sensory symptoms have usually improved or resolved within several months of paclitaxel discontinuation. Pre-existing neuropathies resulting from prior therapies are not a contraindication for paclitaxel therapy.

**Alopecia:** Alopecia was observed in 87% of patients and was abrupt in onset. The majority of alopecia events occurred less than one month after initiation of paclitaxel. Pronounced hair loss ≥50 % is expected for the majority of patients who experience alopecia.

**Arthralgia or myalgia** affected 60% of patients and was severe in 13% of patients. Injection site reactions during intravenous administration may lead to localised oedema, pain, erythema, and induration; on occasion, extravasation can result in cellulitis. Skin sloughing and/or peeling has been reported, sometimes related to extravasation. Skin discoloration may also occur. Recurrence of skin reactions at a site of previous extravasation following administration of paclitaxel at a different site, i.e. “recall”, has been reported rarely. A specific treatment for extravasation reactions is unknown currently.

In some cases, the onset of the injection site reaction either occurred during a prolonged infusion or was delayed by a week to 10 days.

The table below lists undesirable effects regardless of severity associated with the administration of single agent paclitaxel administered as a three-hour infusion in the metastatic setting (812 patients treated in clinical studies) and as reported in the post-marketing surveillance\* of paclitaxel.

The frequency of undesirable effects listed below is defined using the following convention:

very common (≥ 1/10); common (≥ 1/100, < 1/10); uncommon (≥ 1/1,000, < 1/100); rare (≥ 1/10,000, < 1/1,000); very rare (< 1/10,000); not known (cannot be estimated from the available data). Within each frequency grouping, undesirable effects are presented in order of decreasing seriousness.

**Table: Frequency of undesirable effects**

<p><b>Infections and infestations:</b></p>	<p><i>Very common:</i> infection (mainly urinary tract and upper respiratory tract infections), with reported cases of fatal outcome</p> <p><i>Common:</i> flu syndrome</p> <p><i>Uncommon:</i> septic shock</p> <p><i>Rare*:</i> pneumonia, peritonitis, sepsis</p>
--------------------------------------------	----------------------------------------------------------------------------------------------------------------------------------------------------------------------------------------------------------------------------------------------------------------------

<b>Blood and lymphatic system disorders:</b>	<p><i>Very common:</i> myelosuppression, neutropenia, anaemia, thrombocytopenia, leucopenia, bleeding</p> <p><i>Common:</i> neutropenic fever</p> <p><i>Uncommon:</i> severe anaemia</p> <p><i>Rare*:</i> febrile neutropenia</p> <p><i>Very rare*:</i> acute myeloid leukaemia, myelodysplastic syndrome</p>
<b>Immune system disorders:</b>	<p><i>Very common:</i> minor hypersensitivity reactions (mainly flushing and rash)</p> <p><i>Uncommon:</i> significant hypersensitivity reactions requiring therapy (e.g., hypotension, angioneurotic oedema, respiratory distress, generalised urticaria, chills, back pain, chest pain, tachycardia, abdominal pain, pain in extremities, diaphoresis and hypertension)</p> <p><i>Rare*:</i> anaphylactic reactions</p> <p><i>Very rare*:</i> anaphylactic shock</p>
<b>Metabolism and nutrition disorders:</b>	<p><i>Uncommon*:</i> weight gain, weight loss</p> <p><i>Very rare*:</i> anorexia</p> <p><i>Not known*:</i> tumour lysis syndrome</p>
<b>Psychiatric disorders:</b>	<p><i>Very rare*:</i> confusional stage</p>
<b>Nervous system disorders:</b>	<p><i>Very common:</i> neurotoxicity (mainly: peripheral neuropathy) , paraesthesia, somnolence</p> <p><i>Common:</i> depression, severe neuropathy, nervousness, insomnia, hypokinesia, abnormal gait, abnormal thinking, hypoaesthesia, taste change</p> <p><i>Rare*:</i> motor neuropathy (with resultant minor distal weakness)</p> <p><i>Very rare*:</i> autonomic neuropathy (resulting in paralytic ileus and orthostatic hypotension), grand mal seizures</p>
<b>Eye disorders</b>	<p><i>Uncommon:</i> dry eyes, amblyopia, visual field defect</p> <p><i>Very rare*:</i> optic nerve and/or visual disturbances (scintillating scotomata), particularly in patients who have received higher doses than recommended</p> <p><i>Not known*:</i> macular oedema, photopsia, vitreous floaters</p>

<b>Ear and labyrinth disorders:</b>	<i>Very rare*</i> : ototoxicity, hearing loss, tinnitus, vertigo
<b>Cardiac disorders:</b>	<p><i>Common</i>: bradycardia , tachycardia, palpitation, syncope</p> <p><i>Uncommon</i>: cardiomyopathy, asymptomatic ventricular tachycardia, tachycardia with bigeminy, AV block and syncope, myocardial infarction , congestive heart failure</p> <p><i>Rare*</i>: cardiac failure</p> <p><i>Very rare*</i>: atrial fibrillation, supraventricular tachycardia</p>
<b>Vascular disorders:</b>	<p><i>Very common</i>: hypotension</p> <p><i>Common</i>: vasodilatation (flushing)</p> <p><i>Uncommon</i>: hypertension, thrombosis, thrombophlebitis</p> <p><i>Very rare*</i>: shock</p> <p><i>Not known*</i>: phlebitis</p>
<b>Respiratory, thoracic and mediastinal disorders:</b>	<p><i>Common</i>: epistaxis</p> <p><i>Rare*</i>: dyspnoea, pleural effusion, interstitial pneumonia, lung fibrosis, pulmonary embolism, respiratory failure</p> <p><i>Very rare*</i>: cough , pulmonary hypertension</p>
<b>Gastrointestinal disorders:</b>	<p><i>Very common</i>: nausea, vomiting, diarrhoea, mucosal inflammation , stomatitis, abdominal pain</p> <p><i>Common</i>: dry mouth, mouth ulceration, melaena, dyspepsia</p> <p><i>Rare*</i>: bowel obstruction, bowel perforation, ischaemic colitis, pancreatitis</p> <p><i>Very rare*</i>: mesenteric thrombosis, pseudomembranous colitis, oesophagitis, constipation, ascites, neutropenic colitis</p>
<b>Hepato-biliary disorders:</b>	<i>Very rare*</i> : hepatic necrosis, hepatic encephalopathy (both with reported cases of fatal outcome)
<b>Skin and subcutaneous tissue disorders:</b>	<p><i>Very common</i>: alopecia</p> <p><i>Common</i>: transient and mild nail and skin changes</p>

	<p><i>Uncommon:</i> changes in nail pigmentation or discoloration of nail bed</p> <p><i>Rare*:</i> pruritus, rash, erythema</p> <p><i>Very rare*:</i> Stevens-Johnson syndrome, epidermal necrolysis, erythema multiforme, exfoliative dermatitis, urticaria, onycholysis (patients on therapy should wear sun protection on hands and feet) , folliculitis</p> <p><i>Not known*:</i> scleroderma</p>
<b>Musculoskeletal, connective tissue disorders:</b>	<p><i>Very common:</i> arthralgia, myalgia</p> <p><i>Common:</i> bone pain, leg cramps, myasthenia, back pain</p> <p><i>Not known*:</i> systemic lupus erythematosus</p>
<b>General disorders and administration site conditions:</b>	<p><i>Very common:</i> asthenia, pain, oedema including peripheral and face</p> <p><i>Common:</i> injection site reactions (including localised oedema, pain, erythema, induration, on occasion extravasation can result in cellulitis, skin fibrosis and skin necrosis) , chest pain, chills</p> <p><i>Rare*:</i> asthenia, pyrexia, dehydration, oedema, malaise</p>
<b>Renal and urinary disorders</b>	<p><i>Common:</i> dysuria</p>
Investigations:	<p><i>Common:</i> severe elevation in AST (SGOT), severe elevation in alkaline phosphatase</p> <p><i>Uncommon:</i> severe elevation in bilirubin</p> <p><i>Rare*:</i> increase in blood creatinine</p>

Breast cancer patients who received paclitaxel in the adjuvant setting following AC experienced more neurosensory toxicity, hypersensitivity reactions, arthralgia/myalgia, anaemia, infection, fever, nausea/vomiting and diarrhoea than patients who received AC alone. However, the frequency of these events was consistent with the use of single agent paclitaxel, as reported above.

### **Combination treatment**

The following discussion refers to two major trials for the first-line chemotherapy of ovarian carcinoma (paclitaxel + cisplatin: over 1050 patients); two phase III trials in the first line treatment of metastatic breast cancer: one investigating the combination with doxorubicin (paclitaxel + doxorubicin: 267 patients), another one investigating the combination with trastuzumab (planned subgroup analysis paclitaxel + trastuzumab: 188 patients) and two phase III trials for the treatment of advanced NSCLC (paclitaxel + cisplatin: over 360 patients).

When administered as a three hour infusion for the first-line chemotherapy of ovarian cancer, neurotoxicity, arthralgia/myalgia, and hypersensitivity were reported as more frequent and severe by patients treated with paclitaxel followed by cisplatin than patients treated with

cyclophosphamide followed by cisplatin. Myelosuppression appeared to be less frequent and severe with paclitaxel as a three hour infusion followed by cisplatin compared with cyclophosphamide followed by cisplatin.

For the first line chemotherapy of metastatic breast cancer, neutropenia, anaemia, peripheral neuropathy, arthralgia/myalgia, asthenia, fever, and diarrhoea were reported more frequently and with greater severity when paclitaxel (220 mg/m<sup>2</sup>) was administered as a 3-hour infusion 24 hours following doxorubicin (50 mg/m<sup>2</sup>) when compared to standard FAC therapy (5-FU 500 mg/m<sup>2</sup>, doxorubicin 50 mg/m<sup>2</sup>, cyclophosphamide 500 mg/m<sup>2</sup>). Nausea and vomiting appeared to be less frequent and severe with the paclitaxel (220 mg/m<sup>2</sup>) / doxorubicin (50 mg/m<sup>2</sup>) regimen as compared to the standard FAC regimen. The use of corticosteroids may have contributed to the lower frequency and severity of nausea and vomiting in the paclitaxel/doxorubicin arm.

When paclitaxel was administered as a 3-hour infusion in combination with trastuzumab for the first line treatment of patients with metastatic breast cancer, the following events (regardless of relationship to paclitaxel or trastuzumab) were reported more frequently than with single agent paclitaxel: heart failure (8% vs 1%), infection (46% vs 27%), chills (42% vs 4%), fever (47% vs 23%), cough (42% vs 22%), rash (39% vs 18%), arthralgia (37% vs 21%), tachycardia (12% vs 4%), diarrhoea (45% vs 30%), hypertonia (11% vs 3%), epistaxis (18% vs 4%), acne (11% vs 3%), herpes simplex (12% vs 3%), accidental injury (13% vs 3%), insomnia (25% vs 13%), rhinitis (22% vs 5%), sinusitis (21% vs 7%), and injection site reaction (7% vs 1%). Some of these frequency differences may be due to the increased number and duration of treatments with paclitaxel/trastuzumab combination vs single agent paclitaxel. Severe events were reported at similar rates for paclitaxel/trastuzumab and single agent paclitaxel.

When doxorubicin was administered in combination with paclitaxel in metastatic breast cancer, **cardiac contraction abnormalities** ( $\geq 20\%$  reduction of left ventricular ejection fraction) were observed in 15% of patients vs. 10% with standard FAC regimen. **Congestive heart failure** was observed in < 1% in both paclitaxel/doxorubicin and standard FAC arms. Administration of trastuzumab in combination with paclitaxel in patients previously treated with anthracyclines resulted in an increased frequency and severity of **cardiac dysfunction** in comparison with patients treated with paclitaxel single agent (NYHA Class I/II 10% vs. 0%; NYHA Class III/IV 2% vs. 1%) and rarely has been associated with death. In all but these rare cases, patients responded to appropriate medical treatment.

In eight published clinical trials (8 Phase III trials) including 4735 patients with advanced ovarian cancer and in twelve published clinical trials (one large Phase II and eleven Phase III trials) including 4315 NSCLC patients treated with paclitaxel and platinum-containing regimens, similar undesirable effects were observed compared to single-agent paclitaxel treatment. Additionally, ileus, effects on creatinine clearance, abnormal electrolytes (e.g. hyponatraemia, hypomagnesaemia), hyperglycaemia, cough and pneumonia occurred very rarely.

**Radiation pneumonitis** has been reported in patients receiving concurrent radiotherapy.

#### **AIDS-related Kaposi's sarcoma**

Except for haematologic and hepatic undesirable effects, the frequency and severity of undesirable effects are generally similar between KS patients and patients treated with paclitaxel monotherapy for other solid tumours, based on a clinical study including 107 patients treated with 100 mg/m<sup>2</sup> paclitaxel administered as a 3-hour infusion as second-line chemotherapy.

**Blood and the lymphatic system disorders:** bone marrow suppression was the major dose-limiting toxicity. Neutropenia is the most important haematological toxicity. During the first course of treatment, severe neutropenia ( $< 500$  cells/mm<sup>3</sup>) occurred in 20% of patients. During the entire treatment period, severe neutropenia was observed in 39% of patients. Neutropenia was present for  $> 7$  days in 41% and for 30-35 days in 8% of patients. It resolved within 35 days in all patients who were followed. The incidence of Grade 4 neutropenia lasting  $\geq 7$  days was 22%.

Neutropenic fever related to paclitaxel was reported in 14% of patients and in 1.3% of treatment cycles. There were 3 septic episodes (2.8%) during paclitaxel administration related to the medicinal product that proved fatal.

Thrombocytopenia was observed in 50% of patients and was severe ( $< 50,000$  cells/mm<sup>3</sup>) in 9%. Only 14% experienced a drop in their platelet count  $< 75,000$  cells/mm<sup>3</sup>, at least once while on treatment. Bleeding episodes related to paclitaxel were reported in  $< 3\%$  of patients, but the haemorrhagic episodes were localised.

Anaemia (Hb  $< 11$  g/dL) was observed in 61% of patients and was severe (Hb  $< 8$  g/dL) in 10%. Red cell transfusions were required in 21% of patients.

**Hepato-biliary disorders:** Among patients ( $> 50\%$  on protease inhibitors) with normal baseline liver function, 28%, 43% and 44% had elevations in bilirubin, alkaline phosphatase and AST (SGOT), respectively. For each of these parameters, the increases were severe in 1% of cases.

#### **Reporting of suspected adverse reactions**

Reporting suspected adverse reactions after authorisation of the medicinal product is important. It allows continued monitoring of the benefit/risk balance of the medicinal product. Report suspected adverse reactions via any point of contact available at [www.torrentpharma.com](http://www.torrentpharma.com) or at email: [pv@torrentpharma.com](mailto:pv@torrentpharma.com) or call on 1800-120-3001.

#### **4.9. Overdose**

There is no known antidote for paclitaxel overdosage.

In case of overdose, the patient should be closely monitored. Treatment should be directed at the primary anticipated toxicities, which consist of bone marrow suppression, peripheral neurotoxicity, and mucositis.

### **5) Pharmacological properties**

#### **5.1. Mechanism of Action**

Paclitaxel is a novel antimicrotubule agent that promotes the assembly of microtubules from tubulin dimers and stabilises microtubules by preventing depolymerization. This stability results in the inhibition of the normal dynamic reorganisation of the microtubule network that is essential for vital interphase and mitotic cellular functions. In addition, paclitaxel induces abnormal arrays or bundles of microtubules throughout the cell cycle and multiple asters of microtubules during mitosis.

#### **5.2. Pharmacodynamic properties**

##### Ovarian carcinoma

In the first-line chemotherapy of ovarian carcinoma, the safety and efficacy of paclitaxel were evaluated in two majors, randomised, controlled (vs. cyclophosphamide 750 mg/m<sup>2</sup> / cisplatin 75 mg/m<sup>2</sup>) trials. In the Intergroup trial (BMS CA139-209), over 650 patients with stage IIb-c, III or IV primary ovarian cancer received a maximum of 9 treatment courses of paclitaxel (175 mg/m<sup>2</sup> over 3 hr) followed by cisplatin (75 mg/m<sup>2</sup>) or control. The second major trial

(GOG111/BMS CA139-022) evaluated a maximum of 6 courses of either paclitaxel (135 mg/m<sup>2</sup> over 24 hrs) followed by cisplatin (75 mg/m<sup>2</sup>) or control in over 400 patients with stage III/IV primary ovarian cancer, with a > 1 cm residual disease after staging laparotomy, or with distant metastases. While the two different paclitaxel posologies were not compared with each other directly, in both trials patients treated with paclitaxel in combination with cisplatin had a significantly higher response rate, longer time to progression, and longer survival time when compared with standard therapy. Increased neurotoxicity, arthralgia/myalgia but reduced myelosuppression was observed in advanced ovarian cancer patients administered 3-hour infusion paclitaxel/cisplatin as compared to patients who received cyclophosphamide/cisplatin.

### Breast carcinoma

In the adjuvant treatment of breast carcinoma, 3121 patients with node positive breast carcinoma were treated with adjuvant paclitaxel therapy or no chemotherapy following four courses of doxorubicin and cyclophosphamide (CALGB 9344, BMS CA 139-223). Median follow-up was 69 months. Overall, paclitaxel patients had a significant reduction of 18% in the risk of disease recurrence relative to patients receiving AC alone ( $p = 0.0014$ ), and a significant reduction of 19% in the risk of death ( $p = 0.0044$ ) relative to patients receiving AC alone. Retrospective analyses show benefit in all patient subsets. In patients with hormone receptor negative/ unknown tumours, reduction in risk of disease recurrence was 28% (95%CI: 0.59-0.86). In the patient subgroup with hormone receptor positive tumours, the risk reduction of disease recurrence was 9% (95%CI: 0.78-1.07). However, the design of the study did not investigate the effect of extended AC therapy beyond 4 cycles. It cannot be excluded on the basis of this study alone that the observed effects could be partly due to the difference in duration of chemotherapy between the two arms (AC 4 cycles; AC + paclitaxel 8 cycles). Therefore, adjuvant treatment with paclitaxel should be regarded as an alternative to extended AC therapy.

In a second large clinical study in adjuvant node positive breast cancer with a similar design, 3060 patients were randomized to receive or not four courses of paclitaxel at a higher dose of 225 mg/m<sup>2</sup> following four courses of AC (NSABP B-28, BMS CA139-270). At a median follow-up of 64 months, paclitaxel patients had a significant reduction of 17% in the risk of disease recurrence relative to patients who received AC alone ( $p = 0.006$ ); paclitaxel treatment was associated with a reduction in the risk of death of 7% (95%CI: 0.78-1.12). All subset analyses favored the paclitaxel arm. In this study patients with hormone receptor positive tumour had a reduction in the risk of disease recurrence of 23% (95%CI: 0.6-0.92); in the patient subgroup with hormone receptor negative tumour the risk reduction of disease recurrence was 10% (95%CI: 0.7-1.11).

In the first-line treatment of metastatic breast cancer, the efficacy and safety of paclitaxel were evaluated in two pivotal, phase III, randomised, controlled open-label trials. In the first study (BMS CA139-278), the combination of bolus doxorubicin (50 mg/m<sup>2</sup>) followed 24 hours by paclitaxel (220 mg/m<sup>2</sup> by 3-hour infusion) (AT), was compared versus standard FAC regimen (5-FU 500 mg/m<sup>2</sup>, doxorubicin 50 mg/m<sup>2</sup>, cyclophosphamide 500 mg/m<sup>2</sup>), both administered every three weeks for eight courses. In this randomised study, 267 patients with metastatic breast cancer, who had either received no prior chemotherapy or only non-anthracycline chemotherapy in the adjuvant setting, were enrolled. Results showed a significant difference in time to progression for patients receiving AT compared to those receiving FAC (8.2 vs. 6.2 months;  $p = 0.029$ ). The median survival was in favour of paclitaxel/doxorubicin vs. FAC (23.0 vs. 18.3 months;  $p = 0.004$ ). In the AT and FAC treatment arm 44% and 48% respectively received follow-up chemotherapy which included taxanes in 7% and 50% respectively. The overall response rate was also significantly higher in the AT arm compared to the FAC arm

(68% vs. 55%). Complete responses were seen in 19% of the paclitaxel/doxorubicin arm patients vs. 8% of the FAC arm patients. All efficacy results have been subsequently confirmed by a blinded independent review.

In the second pivotal study, the efficacy and safety of the paclitaxel and trastuzumab combination was evaluated in a planned subgroup analysis (metastatic breast cancer patients who formerly received adjuvant anthracyclines) of the study HO648g. The efficacy of trastuzumab in combination with paclitaxel in patients who did not receive prior adjuvant anthracyclines has not been proven. The combination of trastuzumab (4 mg/kg loading dose then 2 mg/kg weekly) and paclitaxel (175 mg/m<sup>2</sup>) 3-hour infusion, every three weeks was compared to single-agent paclitaxel (175 mg/m<sup>2</sup>) 3-hour infusion, every three weeks in 188 patients with metastatic breast cancer overexpressing HER2 (2+ or 3+ as measured by immunohistochemistry), who had previously been treated with anthracyclines. Paclitaxel was administered every three weeks for at least six courses while trastuzumab was given weekly until disease progression. The study showed a significant benefit for the paclitaxel/trastuzumab combination in terms of time to progression (6.9 vs. 3.0 months), response rate (41% vs. 17%), and duration of response (10.5 vs. 4.5 months) when compared to paclitaxel alone. The most significant toxicity observed with the paclitaxel/trastuzumab combination was cardiac dysfunction.

#### Advanced non-small cell lung carcinoma

In the treatment of advanced NSCLC, paclitaxel 175 mg/m<sup>2</sup> followed by cisplatin 80 mg/m<sup>2</sup> has been evaluated in two phase III trials (367 patients on paclitaxel containing regimens). Both were randomised trials, one compared to treatment with cisplatin 100 mg/m<sup>2</sup>, the other used teniposide 100 mg/m<sup>2</sup> followed by cisplatin 80 mg/m<sup>2</sup> as comparator (367 patients on comparator). Results in each trial were similar. For the primary outcome of mortality, there was no significant difference between the paclitaxel containing regimen and the comparator (median survival times 8.1 and 9.5 months on paclitaxel containing regimens, 8.6 and 9.9 months on comparators). Similarly, for progression-free survival there was no significant difference between treatments. There was a significant benefit in terms of clinical response rate. Quality of life results are suggestive of a benefit on paclitaxel containing regimens in terms of appetite loss and provide clear evidence of the inferiority of paclitaxel containing regimens in terms of peripheral neuropathy (p <0.008).

#### AIDS-related Kaposi's sarcoma

In the treatment of AIDS-related KS, the efficacy and safety of paclitaxel were investigated in a non-comparative study in patients with advanced KS, previously treated with systemic chemotherapy. The primary end-point was best tumour response. Of the 107 patients, 63 were considered resistant to liposomal anthracyclines. This subgroup is considered to constitute the core efficacy population. The overall success rate (complete/partial response) after 15 cycles of treatment was 57% (CI 44 - 70%) in liposomal anthracycline-resistant patients. Over 50% of the responses were apparent after the first 3 cycles. In liposomal anthracycline-resistant patients, the response rates were comparable for patients who had never received a protease inhibitor (55.6%) and those who received one at least 2 months prior to treatment with paclitaxel (60.9%). The median time to progression in the core population was 468 days (95% CI 257-NE). Median survival could not be computed, but the lower 95% bound was 617 days in core patients.

### **5.3. Pharmacokinetic properties**

Following intravenous administration, paclitaxel exhibits a biphasic decline in plasma concentrations.

The pharmacokinetics of paclitaxel were determined following 3- and 24-hour infusions at doses of 135 and 175 mg/m<sup>2</sup>. Mean terminal half-life estimates ranged from 3.0 to 52.7 hours, and mean, non-compartmentally derived, values for total body clearance ranged from 11.6 to 24.0 l/hr/m<sup>2</sup>; total body clearance appeared to decrease with higher plasma concentrations of paclitaxel. Mean steady-state volume of distribution ranged from 198 to 688 l/m<sup>2</sup>, indicating extensive extravascular distribution and/or tissue binding. With the 3-hour infusion, increasing doses result in non-linear pharmacokinetics. For the 30% increase in dose from 135 mg/m<sup>2</sup> to 175 mg/m<sup>2</sup>, the C<sub>max</sub> and AUC<sub>→∞</sub> values increased 75% and 81%, respectively.

Following an intravenous dose of 100 mg/ m<sup>2</sup> given as a 3-hour infusion to 19 KS patients, the mean C<sub>max</sub> was 1,530 ng/ml (range 761 - 2,860 ng/ml) and the mean AUC 5,619 ng.hr/ml (range 2,609 - 9,428 ng.hr/ml). Clearance was 20.6 l/h/ m<sup>2</sup> (range 11-38) and the volume of distribution was 291 l/ m<sup>2</sup> (range 121-638). The terminal elimination half-life averaged 23.7 hours (range 12 - 33).

Inpatient variability in systemic paclitaxel exposure was minimal. There was no evidence for accumulation of paclitaxel with multiple treatment courses.

*In vitro* studies of binding to human serum proteins indicate that 89-98% of medicinal product is bound. The presence of cimetidine, ranitidine, dexamethasone, or diphenhydramine did not affect protein binding of paclitaxel.

The disposition of paclitaxel has not been fully elucidated in humans. Mean values for cumulative urinary recovery of unchanged drug have ranged from 1.3 to 12.6% of the dose, indicating extensive non-renal clearance. Hepatic metabolism and biliary clearance may be the principal mechanism for disposition of paclitaxel. Paclitaxel appears to be metabolised primarily by cytochrome P450 enzymes. Following administration of a radiolabelled paclitaxel, an average of 26, 2 and 6% of the radioactivity was excreted in the faeces as 6 $\alpha$ -hydroxy paclitaxel, 3'-p-hydroxypaclitaxel, and 6 $\alpha$ -3'-p- dihydroxy-paclitaxel, respectively. The formation of these hydroxylated metabolites is catalysed by CYP2C8, -3A4, and both -2C8 and -3A4 respectively. The effect of renal or hepatic dysfunction on the disposition of paclitaxel following a 3-hour infusion has not been investigated formally. Pharmacokinetic parameters obtained from one patient undergoing haemodialysis who received a 3-hour infusion of paclitaxel 135 mg/m<sup>2</sup> were within the range of those defined in non-dialysis patients.

In clinical trials where paclitaxel and doxorubicin were administered concomitantly, the distribution and elimination of doxorubicin and its metabolites were prolonged. Total plasma exposure to doxorubicin was 30% higher when paclitaxel immediately followed doxorubicin than when there was a 24-hour interval between drugs.

## **6) Nonclinical properties**

### **6.1. Animal Toxicology or Pharmacology**

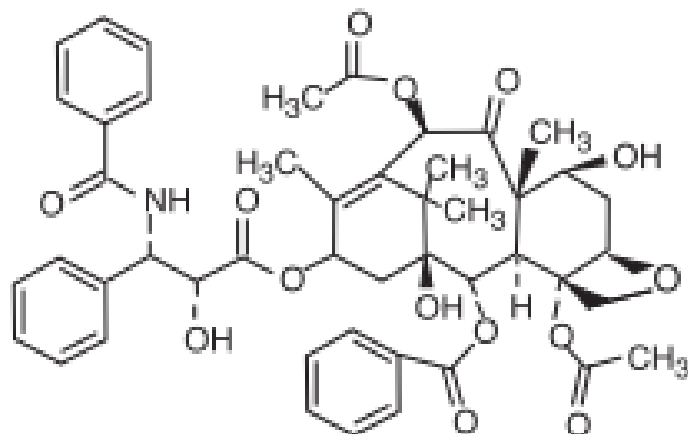
The carcinogenic potential of paclitaxel has not been studied. However, paclitaxel is a potential carcinogenic and genotoxic agent, based upon its pharmacodynamic mechanism of action. Paclitaxel has been shown to be mutagenic in both *in vitro* and *in vivo* mammalian test systems.

Paclitaxel has been shown to be embryotoxic and foetotoxic in rabbits, and to decrease fertility in rats.

## 7) Description

### Paclitaxel

Paclitaxel is 5 $\beta$ ,20-Epoxy-1,2 $\alpha$ ,4,7 $\beta$ ,10 $\beta$ ,13 $\alpha$ -hexahydroxytax-11-en-9-one-4,10-diacetate-2-benzoate-13-ester with (2R,3S)-N-benzoyl-3-phenylisoserine. The empirical formula is C<sub>47</sub>H<sub>51</sub>NO<sub>14</sub>, and its molecular weight is 853.9 g/mol. The chemical structure of Paclitaxel is:



### Tortaxel 30/100/260

Tortaxel is a clear colourless to slight yellow viscous solution. The list of excipients used is Polyoxyl 35 Castor Oil, Absolute Alcohol, Citric Acid Anhydrous.

## 8) Pharmaceutical particulars

### 8.1. Incompatibilities

Not applicable

### 8.2. Shelf-life

Do not use later than the date of expiry.

### 8.3. Packaging information

Tortaxel 30/100/260 is available in pack of vial.

### 8.4. Storage and handing instructions

Store below 25°C, Protected from light. Do not freeze.

Keep out of reach of children.

Warning: To be supplied against demand from cancer hospitals, institution and against prescription of Oncologist only.

## 9) Patient Counselling Information

Ask the patients to inform the treating physicians in case of any of the below:

- Have any allergies
- Have kidney or liver problems
- Are pregnant or plan to become pregnant
- Are breastfeeding or plan to breastfeed
- Have any serious illness
- Are taking any medicines (prescription, over-the-counter, vitamins, or herbal products)

**10) Details of manufacturer**

Naprod Life Sciences Pvt. Ltd.  
G-17/1, M.I.D.C., Tarapur Industrial Area,  
Boisar, Dist. -Thane 401 506, India.

**11) Details of permission or licence number with date**

Mfg. Lic. No. is KD-141. Issue on 06.01.2017.

**12) Date of revision**

MAR 2026

**MARKETED BY**

**TORRENT**  
PHARMA

TORRENT PHARMACEUTICALS LTD.

**IN/TORTAXEL/MAR 2026/02/PI**